

Ricoh Aficio MP C2800/C3300
Color Digital Imaging System
Outstanding Color For Any Application

RICOH



productive



vibrant



versatile

Ricoh Aficio MP C2800/C3300

Enhance productivity for color and black & white.

Based on an award-winning design, the fast and versatile RICOH® Aficio® MP C2800/C3300 give your organization an easy, affordable way to bring the power of color to business-critical documents. Both deliver high-quality color for vivid results in a wide range of applications and provide fast, precise black & white output. They can be configured with tools to optimize workflow, from scanning and faxing to finishing and color management. That means the Ricoh Aficio MP C2800/C3300 offer an ideal way to make a significant impact on productivity, reduce outsourcing and add convenient multifunctional capabilities to any office.



EfficientFastFlexibleVibrant

Superior Speed for Your Workflow

Depend on these go-to systems for exceptional speed and efficiency in any environment, as well as capabilities that reduce turnaround time.

- Complete presentations, spreadsheets and other jobs quickly with output speeds of 28 or 33 pages-per-minute for both full-color and black & white documents.
- Get the documents you need faster. The Aficio MP C2800/C3300 deliver the first color copy in just 8.0 seconds or 5.0 seconds for black & white. They also have short warm-up and recovery times from Off/Sleep mode.
- Process large color files and other complex print jobs in record time with a powerful 600 MHz controller, 1 GB RAM and a standard 80 GB Hard Disk Drive.
- Support site-specific networking requirements using a variety of standard and optional interfaces. Both systems are also compatible with many operating environments, including UNIX, AS/400, Macintosh and Windows.



Find the features and functions you need in seconds with the large, easy-to-navigate, full-color W-VGA Control Panel with Simplified Display and animated user guidance.

Standout Color Quality

Whether you only need occasional color for critical documents or a color device that can handle heavier workloads, the Ricoh Aficio MP C2800/C3300 use patented P_xP™ Toner and a powerful print engine to ensure amazing results on every page.

- Generate bold, high-quality color documents with resolutions up to 1200 x 1200 dpi.
- Reduce the need for expensive outsourcing by enabling your team to get creative and produce more full-color documents in-house.
- Create the right image for your organization. Professional color documents help you gain attention, persuade customers and make key messages more memorable.



Ricoh's P_xP™ toner provides more vivid colors and smooth gradations for improved photographic reproduction and better solid fills for fine lines and text.

Flexible Paper Handling

With extensive options for paper handling and finishing, the versatile Aficio MP C2800/C3300 can produce an incredibly wide range of documents.

- Print on a variety of sizes and stocks to produce three-hole-punched reports, oversized postcards, spreadsheets, presentations, and more. Both systems support output up to 12" x 18" (through the Bypass Tray) and accept heavy stocks (up to 140 lb. Index).
- Eliminate manual collation and stapling using the optional 500-Sheet Finisher or 1,000-Sheet Finisher with conventional stapling, or the 1,000-Sheet Booklet Finisher with saddle-stitching and optional hole-punching.
- Run long jobs without interruption with a standard paper capacity of 1,200 sheets.
- Add capacity with a 1 x 550-Sheet or 2 x 550-Sheet Paper Bank, or the 2,000-Sheet Tandem Large Capacity Tray (LCT). You can also add the 1,200-Sheet Side LCT for a maximum paper capacity of 4,400 sheets.



With fast color output and professional finishing, you can eliminate manual collation and stapling and minimize the need for outsourcing.

Ricoh Aficio MP C2800/C3300

Advanced Document Management

The Ricoh Aficio MP C2800/C3300 include advanced scanning, faxing and other capabilities that have become essential elements of daily document workflow.

- Send documents to any destination quickly and easily. *Scan-to* functions include Scan-to-E-mail for rapid delivery, Scan-to-Folder for automated archiving, Scan-to-Media (USB/SD) for instant document portability and Scan-to-URL to minimize network traffic.
- Send and receive fax documents electronically with Internet (T.37) faxing, use LAN faxing to transmit faxes directly from a PC without leaving your desk, or distribute documents quickly with IP (T.38) and conventional Super G3 faxing.
- Minimize errors and ensure faxes reach their intended recipients. Both systems detect blank pages and enable users to double-check fax destinations before transmission.
- Print a PDF or JPEG attachment by simply sending an e-mail to the system, using the innovative Mail-to-Print feature.
- Get incoming faxes no matter where you are by redirecting incoming faxes to an e-mail address or network folder. This also eliminates lost hard copy faxes.
- Minimize file size, reduce network traffic and maintain exceptional image quality for scanned color documents with the standard High Compression PDF feature.

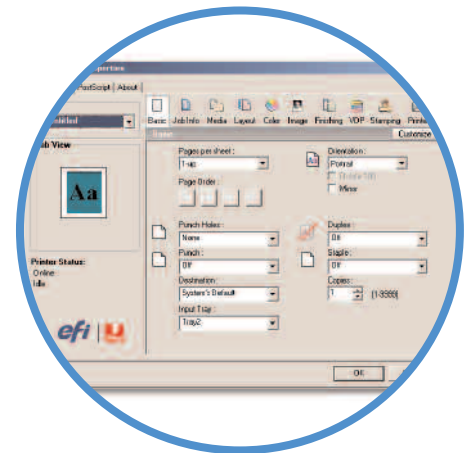


Scan files directly to removable media, such as an SD card or USB flash drive, for instant portability.

Advanced Color Control

Maintain precise, professional control over color management with the optional EFI Fiery™ Controller.

- Leverage all the full-color capabilities of these systems' print engines, including graphics-intensive applications and accurate spot color.
- Adjust color output to suit a variety of application-specific needs with intelligent color management. Get the results you expect whether you are printing RGB, CMYK or even PANTONE® colors.
- Use this high-end controller for additional full-color firepower to print complex color documents efficiently and accurately, time after time.



The optional EFI Fiery™ Controller is ideal for users who need greater control over color management and precise spot color matching.

End-To-End Solutions

Adding the Aficio MP C2800/C3300 to your office means you gain access to a broad portfolio of seamlessly integrated software solutions from Ricoh and a long list of partners.

- Incorporate proven Ricoh solutions for document capture and distribution, storage and management, variable data printing, assessment and cost recovery, device management and print security. These offerings are designed to work with Ricoh MFPs, transforming them into true document portals.
- Leverage the smartest, most effective workflow tools and streamline every aspect of your organization with Ricoh. We partner with industry-leading technology innovators to make sure our MFPs can serve as on-ramps to an extensive selection of applications for content management and other business-critical activities.
- Develop customized applications for the Aficio MP C2800/C3300 using Embedded Software Architecture™, a Java-compatible Software Development Kit (SDK).



Ricoh solution partners include all of these organizations and many more.

Reliable Integrated Secure Powerful

Cost-Effective Operation

With exceptional productivity, high reliability and low total cost of ownership (TCO), these systems protect your investment.

- Expect maximum uptime and reliability from these systems, which are designed for heavy office workloads.
- Made for cost-conscious users, the Ricoh Aficio MP C2800/C3300 make it affordable to bring color into your workflow. User authentication lets you control access to color, manage costs and prevent abuse.

Simple and Secure

When you connect the Ricoh Aficio MP C2800/C3300 to your network, you will discover they are highly secure and extremely easy for administrators to manage.



- Handle a long list of common management tasks remotely. Managers can view detailed system information, network settings and supply status right from a standard Web browser.
- Defend against data interception with encrypted PDF transmission, which encrypts PDF data for Scan-to-Email and Scan-to-Folder applications.
- Restrict access to specific system functions (such as scanning or color copying) with several levels of user authentication.
- Protect confidential data. Use the DataOverwriteSecurity System (DOSS) option to automatically overwrite hard drive data after each copy, scan, fax and print job. Or use optional HDD encryption to protect data even if the hard drive is removed or stolen.

Your Environmental Partner

Ricoh continues its long-standing commitment to developing office solutions with environmentally friendly and superior energy- and supply-saving features, without compromising productivity, including:



- Power-Saving Sleep Mode
- Duplex and Combine Copy Modes
- Energy-Saving PXP™ Toner
- Low Noise Levels
- Minimal Ozone Emissions
- Restriction of Hazardous Substances (RoHS) Compliant



User authentication and other security features help protect your documents, your network and the device itself.

Full-Color Multifunctional Performance

Internal Shift-Sort Tray (Optional)

If no finisher is installed, add the Internal Shift-Sort Tray to collate document sets.



125-Sheet Inner One-Bin Tray (Optional)

Provides a cost-effective way to separate copy output from print and fax output.

Finishers (Optional)

The Ricoh MP C2800/C3300 can be equipped with a 500-Sheet or 1,000-Sheet Finisher for traditional stapling, or a 1,000-Sheet Booklet Finisher (shown) that creates professional-quality booklets and offers optional hole-punching.



Paper Trays

Two standard front-loading Paper Trays each hold 550 sheets.

Paper Sources (Optional)

Add an optional Cabinet Stand, 1 x 550-Sheet Paper Bank (Caster Table required), 2 x 550-Sheet Paper Bank (shown) or the 2,000-Sheet Tandem Large Capacity Tray (shown in insert) for maximum versatility. All sources accept stocks up to 140 lb. Index.



Ricoh Aficio MP C2800/C3300

Optional Hardware Accessories

50-Sheet Automatic Reversing Document Feeder (Standard)

Easily handles simplex and duplex originals up to 11" x 17".



Automatic Stackless Duplexing (Standard)

Produces cost-saving two-sided booklets, brochures, presentations, and more.

Bypass Tray

With the 100-Sheet Bypass Tray, total standard paper capacity is 1,200 sheets.



Toner Cartridges

Eliminate interruptions caused by refilling toner with yields at 20,000 for black and 15,000 for color.

1,200-Sheet Side Large Capacity Tray (Optional)

Boosts maximum paper capacity to 4,400 sheets when installed with the 2,000-Sheet Tandem Large Capacity Tray.

Two-Tray Paper Bank (PB3040)¹

Paper Capacity 1,100 sheets (550 x 2)
 Paper Sizes 7.25" x 10.5" – 11" x 17"
 Paper Weights 16 – 68 lb. Bond/140 lb. Index (60 – 256 g/m²)
 Dimensions (WxDxH) 22.8" x 24.4" x 10.2"
 Weight Less than 57 lbs.

One-Tray Paper Bank (PB3080)¹

Paper Capacity 550 sheets (550 x 1)
 Paper Sizes 7.25" x 10.5" – 11" x 17"
 Paper Weights 16 – 68 lb. Bond/140 lb. Index (60 – 256 g/m²)
 Dimensions (WxDxH) 22.8" x 24.4" x 4.7"
 Weight Less than 33 lbs.
 Requires Caster Table.

Tandem Large Capacity Tray (LCT) (PB3050)¹

Paper Capacity 2,000 sheets (1,000 x 2)
 Paper Sizes 8.5" x 11" LEF
 Paper Weights 16 – 68 lb. Bond/140 lb. Index (60 – 256 g/m²)
 Dimensions (WxDxH) 22.8" x 24.4" x 10.2"
 Weight Less than 57 lbs.

FAC33 Cabinet Stand¹

Side Large Capacity Tray (LCT) (RT3000)

Paper Capacity 1,200 sheets
 Paper Sizes 8.5" x 11" LEF
 Paper Weights 16 – 57.5 lb. Bond/80 lb. Cover (60 – 216 g/m²)
 Dimensions (WxDxH) 13.7" x 21.3" x 11.4"
 Weight Less than 31 lbs.
 Requires Two-Tray Paper Bank (PB3040) or Tandem LCT (PB3050).

1,000-Sheet Booklet Finisher (SR3000)²

Paper Sizes 5.5" x 8.5" – 11" x 17", 12" x 18"
 Paper Weights Upper Proof Tray: 14 – 28 lb. Bond (52 – 105 g/m²); Shift Tray: 14 – 68 lb. Bond/140 lb. Index (52 – 256 g/m²)
 Stack Capacity Upper Proof Tray: 100 sheets (8.5" x 11" or smaller), 50 sheets (8.5" x 14" or larger); Shift Tray: 1,000 sheets (8.5" x 11"), 500 sheets (8.5" x 14" or larger), 100 sheets (5.5" x 8.5"); Booklet Tray: 20 sets (2 – 5 sheets/set, all sizes, saddle-stitched) or 10 sets (6 – 10 sheets/set, all sizes, saddle-stitched)
 Staple Capacity 50 sheets (8.5" x 11" or smaller), 30 sheets (8.5" x 14" or larger)
 Saddle Stitch 10 sheets (up to 40 pages)
 Staple Paper Sizes 8.5" x 11" to 11" x 17" (Normal Staple) 8.5" x 11", 8.5" x 14", 11" x 17" (Saddle Stitch)
 Staple Paper Weights 17 – 24 lb. Bond (64 – 90 g/m²)
 Staple Positions 1 staple/2 positions; 2 staples/3 positions
 Dimensions (WxDxH) 21.1" x 23.7" x 36.7"
 Weight Approx. 105.9 lbs. without Punch Unit Option; Approx. 110.3 lbs. with Punch Unit Option

2/3-Hole Punch Unit Option available for Booklet Finisher. Cannot be installed with One-Tray Paper Bank (PB3080).

1,000-Sheet Finisher (SR790)²

Paper Sizes 5.5" x 8.5" – 11" x 17", 12" x 18" (Proof Tray)
 Paper Weights Proof Tray: 14 – 68 lb. Bond/140 lb. Index (52 – 260 g/m²); Shift Tray: 14 – 43 lb. Bond/90 lb. Index (52 – 163 g/m²)
 Stack Capacity Proof Tray: 250 sheets (8.5" x 11" or smaller), 50 sheets (8.5" x 14" or larger); Shift Tray: 1,000 sheets (8.5" x 11"), 500 sheets (8.5" x 14" or larger), 100 sheets (5.5" x 8.5")
 Staple Capacity 50 sheets (8.5" x 11"), 30 sheets (8.5" x 14" or larger)
 Staple Paper Sizes 8.5" x 11" – 11" x 17"
 Staple Paper Weights 17 – 28 lb. Bond (64 – 90 g/m²)
 Staple Positions 1 staple/2 positions; 2 staples/2 positions
 Dimensions (WxDxH) 10.7" x 20.5" x 31.2"
 Weight 55.2 lbs.
 Cannot be installed with One-Tray Paper Bank (PB3080).

500-Sheet Finisher (SR3050)²

Paper Sizes 5.5" x 8.5" – 11" x 17"
 Paper Weights 14 – 67 lb. Bond/140 lb. Index (52 – 253 g/m²)
 Stack Capacity 500 sheets (8.5" x 11" or smaller) 250 sheets (8.5" x 14" or larger)
 Staple Capacity 50 sheets (8.5" x 11") 30 sheets (8.5" x 14" or larger)
 Staple Paper Sizes 8.5" x 11" – 11" x 17"
 Staple Paper Weights 14 – 42 lb. Bond (52 – 157 g/m²)
 Staple Positions 1 staple/4 positions; 2 staples/1 position
 Dimensions (WxDxH) 15.6" x 21.7" x 10.9"
 Weight Less than 26.5 lbs.

Internal Shift-Sort Tray (SH3040)

Paper Sizes 5.5" x 8.5" – 12" x 18"
 Paper Weights 14 – 68 lb. Bond/140 lb. Index (52 – 256 g/m²)
 Paper Capacity 250 sheets (8.5" x 11" or smaller) 125 sheets (8.5" x 14" or larger)
 Weight Approx. 4.4 lbs.
 Internal Shift-Sort Tray cannot be installed with a finisher.

Inner One-Bin Tray (BN3070)

Paper Sizes 5.5" x 8.5" – 11" x 17"
 Bin Capacity 125 sheets
 Paper Weights 16 – 50 lb. Bond/90 lb. Index (60 – 169 g/m²)
 Weight Approx. 5.5 lbs.

¹ Either the Cabinet Stand or one of the paper options must be installed.

² Requires installation of Bridge Unit.

Ricoh Aficio MP C2800/C3300

Specifications

Aficio®

General Specifications

Printing Process	Dry Electrostatic Transfer System with Dual Component Magnetic Brush Development; 4-Drum Method
Output Speed	MP C2800: 28-ppm BW/Full-Color (Letter), 17-ppm (Legal), 14-ppm (Ledger) MP C3300: 33-ppm BW/Full-Color (Letter), 19-ppm (Legal), 17-ppm (Ledger)
Warm-Up Time	29 seconds
First Copy Time	Full-Color: 8.0 sec./BW: 5.0 sec.
Copy Resolution	600 dpi
Document Feeder	Automatic Reversing Document Feeder (ARDF) Standard
Original Capacity	50 sheets
Paper Size	5.5" x 8.5" - 11" x 17"
Paper Weight (simplex)	11 - 34 lb. Bond (40 - 128 g/m ²)
Paper Weight (duplex)	14 - 28 lb. Bond (52 - 105 g/m ²)
Exposure Glass	Up to 11" x 17"
Multiple Copies	Up to 999 copies
Copy Size	11" x 17" max. (full-bleed on 12" x 18")
Input Capacity	Standard: 2 x 550 sheets + 100-Sheet Bypass Tray; Maximum: 4,400 sheets (w/Tandem LCT and Side LCT)
Output Capacity	Standard: 500 sheets Face Down; Maximum: 1,625 sheets (with 1,000-Sheet Finisher + Inner 1-Bin Tray)
Paper Sizes	First Paper Tray: 8.5" x 11" LEF; Second Paper Tray/Paper Bank: 7.25" x 10.5" - 11" x 17"; Bypass Tray: Width: 3.54" - 12", Length: 5.83" - 23.62"; Tandem Large Capacity Tray: 8.5" x 11" LEF; Side Large Capacity Tray: 8.5" x 11" LEF
Paper Weights	Standard Trays/Bypass Tray/Paper Banks/Tandem LCT: 16 - 68 lb. Bond/140 lb. Index (60 - 256 g/m ²); Side LCT: 16 - 57.5 lb. Bond/80 lb. Cover (60 - 216 g/m ²); Duplex Unit: 16 - 45 lb. Bond/90 lb. Index (60 - 169 g/m ²)
Paper Types	Plain/recycled paper, laser printer qualified transparencies, labels, envelopes
Auto Duplex	Standard
Zoom	25% - 400% in 1% increments
Preset Reduction	93%, 85%, 78%, 73%, 65%, 50%, 25%
Preset Enlargement	400%, 200%, 155%, 129%, 121%
Dimensions (WxDxH)	26.4" x 26.4" x 30" (standard configuration)
Weight	Less than 265 lbs. (120 kg) (w/ARDF)
Power Requirements	120V, 60Hz, 12A
Power Consumption	1,500 Watts maximum

Printer Controller Specifications (Standard)

CPU	Intel Celeron-M @ 600 MHz, embedded
Memory	1 GB RAM and 80 GB HDD standard (shared)
Max. Print Speed	MP C2800: 28-ppm BW/Full-Color MP C3300: 33-ppm BW/Full-Color
Print Drivers	Standard: RPCS, PCL5c, PCL6, XPS via download Optional: Adobe® PostScript® 3™ (includes PDF Direct Print), PS Driver for Mobile Printing
Max. Print Resolution	1200 x 1200 dpi
Standard Interfaces	Ethernet (10Base-T/100Base-TX), USB 2.0, USB Host I/F
Optional Interfaces	Ethernet (1000Base-T), IEEE 1284/ECP Parallel, IEEE 802.11a/b/g Wireless LAN, Bluetooth, USB 2.0/SD Slot
Network/Operating Systems	Windows 2000/XP/Server 2003/Server 2008*/Vista; Netware 3.12, 3.2, 4.1, 4.11, 5.0, 5.1, 6, 6.5; UNIX; Sun Solaris, HP-UX, SCO OpenServer, RedHat Linux, IBM AIX; Mac OS 8.6 - 9.2x, OS X 10.1 or later; SAP R/3, NDPS Gateway; IBM iSeries; AS/400-using OS/400 Host Print Transform
Advanced Features	WSD printer Support, Advanced Print Queues (Sample Print, Locked Print, Hold Print, Stored Print), Black Overprint, CLP Simulation, Pantone Color Palette, Chaptering, Classification Codes, Mail-to-Print (requires Fax and PS3 options), PDF Direct Print (requires PS3 option), PictBridge® Support (requires Camera Direct Print option), Bonjour/DDNS Support
Utilities	SmartDeviceMonitor for Admin and Client; Web SmartDeviceMonitor; Web Image Monitor; Print Utility for MAC (w/Adobe PS3 option)

*Server 2008 is not included on the driver CD. It is available via download from the Ricoh website.

Security Specifications

DataOverwriteSecurity Unit (DOSS) (Optional): Security feature that overwrites latent data on the system's hard drive after copy, print, scan and fax jobs

Copy Data Security Unit (Optional): Copies of prints made with this feature will be blacked out or embedded with a watermark to deter illegal copying

HDD Encryption Unit (Optional): Encrypts data on HDD, so data is secure even if HDD is stolen

Other Security Features: Network Protocol On/Off, IP Filtering, SNMP v3 Support, Encryption (Address Book, Password, PDF, SSL Communication, S/MIME, IPsec Communication), Locked (Secure) Print, User Authentication (Windows/LDAP with Kerberos Authentication (External), Basic and User Codes (Internal), 802.1x Wired Authentication, WPA/WPA2 (Wi-Fi Protect Access Support), and more

Scanner Specifications (Standard)

Scanner Resolution	100 - 600 dpi; 1200 dpi for TWAIN only Default setting: 200 dpi
Scanning Speed	50 ipm BW and Full-Color (8.5" x 11" LEF/200 dpi)
Auto Scan Size Detection	Glass: 11" x 17", 8.5" x 14", 8.5" x 11" ARDF: 5.5" x 8.5" - 11" x 17"
Scan Mode	BW Text/Line Art, BW Text, BW Text/Photo, BW Photo, BW Grayscale, Full-Color Photo, Full-Color Text, Auto Color Select (ACS)
Compression Method	BW: TIFF (MH, MR, MMR); Grayscale/Full-Color: JPEG
Scan-to Modes Supported	Scan-to-Email (with LDAP support); Scan-to-URL; Scan-to-Folder (SMB/FTP/NCP); Network TWAIN scanning; Scan-to-Media (USB/SD, optional); WSD scanner (for Vista)

Document Server Specifications (Standard)

Max. Stored Document	1,000 documents
Max. Pages/Document	1,000 pages
Max. Stored Documents	2,000 pages

Facsimile Specifications (Optional)

Fax Option Type C5000 (standard on SPF model)	ITU-T (CCITT) G3, Additional G3 (optional)
Type	STN, PBX
Circuit	200 x 100 dpi, 200 x 200 dpi, 400 x 400 dpi (with optional fax SAF memory)
Resolution	33.6K - 2,400 bps w/Auto Fallback
Modem Speed	MH, MR, MMR, JBIG
Compression Method	G3: Approximately 2 seconds/page (w/JBIG); G3: Approximately 3 seconds/page (w/MMR)
Transmission Speed	0.50 seconds/page LEF (Standard/Detail Mode); 0.94 seconds/page LEF (Super Fine Mode)
Scan Speed	2,000 Quick/Speed Dials, 100 Group Dials (500 locations each)
Auto Dialing	Standard 4 MB (approximately 320 pages); Maximum 28 MB (2,240 pages)
Memory Capacity (SAF)	Internet Fax by E-mail (T.37); IP Fax (T.38); LAN Fax; Fax Forward to E-mail/Folder; LDAP Support
Additional Modes	Additional G3 Lines (up to 2); Fax SAF Memory; Telephone Handset
Options	

Additional Accessories

File Format Converter, Key Counter Bracket, JAVA VM Card for Embedded Software Architecture™ Applications, Optional Counter Interface, USB 2.0/SD Slot (for Scan-to-Media), Camera Direct Print Card, Fiery™ Print Controller

Supplies and Consumables

Black Toner	20,000 pages*
Cyan, Magenta, Yellow Toners	15,000 pages each*

*Toner yields based on 5% coverage.

RICOH
www.ricoh-usa.com

Bringing Ricoh Value to Your Organization
RicoH technology offers a diverse portfolio of solutions to help your organization stay competitive and move ahead. Let Ricoh show you how to empower your business to improve critical processes, keep information secure, ensure compliance and promote environmental sustainability while reducing the total cost of ownership.

Printed in U.S.A. on recycled paper because Ricoh cares.

Ricoh Americas Corporation, Five Dedrick Place, West Caldwell, NJ 07060
RicoH and the Ricoh Logo are registered trademarks of Ricoh Company, Ltd. All other trademarks are the property of their respective owners. Print speed may be affected by network, application or PC performance. Specifications and external appearances are subject to change without notice. Products are shown with optional features.

R2799



FS-C8020MFP

► print ► copy ► scan ► fax

WANT A COMPACT, COLOUR PROFESSIONAL YOU CAN RELY ON?

This compact, A4/A3 format colour multifunctional, specifically designed to meet the requirements of small offices and workgroups, will satisfy even the highest demands on functionality, usability and compactness. Engineered with KYOCERA's renowned long-life components, this new ECOSYS device ensures unprecedented reliability and exceptionally low printing costs with significantly less environmental impact.

- Up to 20/10 pages A4/A3 per minute in colour and b/w
- Time to first copy: 15.6 seconds or less
- High resolution colour print quality
- Professional print, copy, scan, fax functionality
- Up to 1,600 sheets paper capacity
- Easy to install and operate
- Easy-to-use wizard-style navigation
- Low noise emissions match desktop printers
- 360° all-round stylish design
- Long-life components provide unprecedented efficiency and reliability
- Exceptionally low printing costs in its class



The reverse automatic document processor scans double-sided documents for easy filing and forwarding.

Customisable, colour touch panel offers fast, easy access to frequently used functions.



FS-C8020MFP

COLOUR MULTIFUNCTIONAL FOR A4/A3 FORMAT

ECOSYS stands for ECOlogy, ECONomy and SYStem-printing. With their long-life components, ECOSYS devices are designed to maximise durability and minimise the total cost of ownership with regard to maintenance, administration and consumables. The cartridge-free system means that only the toner has to be replaced regularly. The modular design concept allows you to add workflow-enhancing functions as required. Integrated system software provides long-term cross-network compatibility. KYOCERA's long-life components cost you and the environment less.

PRESCRIBE IIc

With the KYOCERA page design and control language PRESCRIBE IIc, even complex graphics, logos and forms (multipart forms) can be created independently on the system and saved and updated in the printer. Consequently, integration into print files no longer applies. They are only accessed as required and therefore relieve the load on the network.

The KM NetViewer

The KM NetViewer enables complete monitoring and control of all ECOSYS printers and digital KYOCERA multifunction units from any Windows® PC and thus provides ideal network administration. It also supports the standardised SNMP protocol.

Status Monitor and Command Center

The Status Monitor shows the current printer's condition and gives direct access to the Command Center for the modification of settings that are not contained in the drivers (e.g. network settings, adjustment of sleep mode or blocking of the control panel).

USB Host Interface for USB Flash Memory

Documents can be printed directly from and scanned to a USB Flash Memory (e.g. USB stick) via the USB host interface. The documents stored as PDF, XPS, TIFF or JPEG are selected directly via the printer's control panel. No computer is required.

General

Technology: KYOCERA ECOSYS, COLOUR Laser

Engine speed: Up to 20/10 pages A4/A3 per minute in colour and b/w

Resolution: 600 x 600 dpi (print), 600 x 600 dpi (scan/copy)

Duty cycle: Max. 100,000 pages per month

Recommended monthly printing volume: Up to 2,500 pages**

Warm-up time: Approx. 55 seconds or less

Time to first print: Approx. 11 seconds or less in b/w, 14 seconds or less in colour

Time to first copy: Approx. 12.7 seconds or less in b/w, 15.6 seconds or less in colour

CPU: PowerPC 464 / 800 MHz

Memory: Standard 1,024 MB, max. 2,048 MB

Standard interface: USB 2.0 (Hi-Speed), USB Host 2.0, Fast Ethernet 10/100/1000Base-TX, slot for optional print server, slot for optional CompactFlash®-Card

Integrated accounting: 100 department codes

Dimensions with Document processor (W x D x H)
590 x 590 x 748 mm

Weight with Document processor: Approx. 80 kg including toner container

Power source: AC 220 ~ 240 V, 50/60 Hz

Power consumption

Printing: 567 Watt

Copying: 567 Watt

Stand-by: 135 Watt

Sleep-mode: 1 Watt

Noise (sound pressure level: ISO 7779/ISO 9296)

Copying/Printing: 47dB(A)

Stand-by: 35dB(A)

Safety standards: TÜV/GS, CE

This unit is manufactured according to ISO 9001 quality standard and ISO 14001 environmental standard.

Paper handling

All paper capacities quoted are based on a paper thickness of max. 0.11 mm. Please use paper recommended by KYOCERA under normal environmental conditions.

Input capacity: 100-sheet multi-purpose tray, 60–256 g/m² (52–163 g/m² for larger than A4/Letter size), A3, A4, A5, A6, B5, Letter, Legal, Folio, envelopes, Custom (98 x 148 to 297 x 432 mm)

500-sheet universal paper cassette, 60–256 g/m², A3, A4, A5, B5, Letter, Legal, Folio, max. input capacity with options: 1,600 sheets

Duplex unit: Duplex as standard supports 60–220 g/m²

Reversing document processor: 50-sheet, Simplex scan 45–160 g/m², Duplex scan 50–120 g/m², A3, A4, A5, B5, Ledger, Letter, Legal, Custom (140x182 to 297x432mm)

Output capacity: Max. 280 sheets; 250 sheets face-down (main tray) plus 30 sheets (job separator tray)

Your KYOCERA Business Partner:

Print functions

Controller language: PRESCRIBE IIc

Emulations: PCL 6 (5c/XL), KPDL 3 (PostScript 3 compatible), PDF Direct Print, XPS Direct Print

Operating systems: All current Windows operating systems, MAC OS X Version 10.4 or higher, Unix, Linux as well as other operating systems on request

Fonts/barcodes: 93 outline fonts (PCL 6, KPDL3) + 8 (Windows Vista), 1 Bitmap font, 45 types of one-dimensional barcodes, 1 type of two-dimensional barcode (PDF417)

Features: Encrypted PDF Direct Print, IPP printing, e-mail printing, WSD print, secure printing via SSL, IPsec, SNMPv3, Private Print (requires memory expansion)

Copy functions

Max. original size: A3/Ledger

Continuous copying: 1–999

Zoom range: 25–400% in 1% steps

Pre-set magnification ratios: 5 Reductions / 5 Enlargements

Exposure mode: Auto, manual: 7 steps

Image adjustments: Text, photo, text + photo, graphic/map, printer output

Features: Scan-once-copy-many, electronic sort, 2in1, 4in1, job reserve, priority print, program, auto duplex copy, split copy, continuous scan, auto cassette change (PF-470 or PF-471 is required), copy density control, Prevent Bleed-Through

Scan functions

Functionality: Scan-to-Email, Scan-to-FTP, Scan-to-SMB, Scan to USB Host, Network TWAIN, WIA, WSD scan

Scan speed: 40ipm (300dpi, A4, b/w, colour)

Scan resolution: 600, 400, 300, 200, 400 x 200, 200 x 100 dpi (256 greyscales per colour)

Max. scan size: A3, Ledger

Original recognition: Text, photo, text + photo, OCR

File types: TIFF, PDF, PDF/A, JPEG, XPS

Compression method: MMR /JPEG

Features: Integrated address book, Active Directory support, encrypted data transfer, multi send (e-mail, fax, SMB/FTP folder, print) at once

Fax functions (optional)

Compatibility: ITU-T Super G3

Modem speed: Max. 33.6 kbps

Transmission speed: Less than 3 seconds.

Scanning speed: 2.0 seconds (quick scanning, bitmap)

Address book: 200 (personal address) + 50 entries (group address)

Scanning density:

Normal: 8 dot/mm x 3.85 line/mm

Fine: 8 dot/mm x 7.7 line/mm

Superfine: 8 dot/mm x 15.4 line/mm

Ultrafine: 16 dot/mm x 15.4 line/mm

Halftone: 256 grey scales

Maximum original size: A3, Ledger

Compression method: JBIG, MMR, MR, MH

Memory reception: 700 sheets or more

Features: Network fax, duplex transmission and reception, encrypted transmission and reception, polling transmission and reception, broadcast

Consumables

Average continuous toner yield in accordance with ISO/IEC 19798

TK-895K Toner-Kit: Microfine toner black for 12,000 pages A4

TK-895C, TK-895M, TK-895Y, Toner-Kit: Microfine toner cyan, magenta, yellow for 6,000 pages A4

Capacity of starter toner is black 3,000 pages, cyan, magenta, yellow 1,500 pages A4

Options

Fax System (U)

Paper handling

PF-470 Paper feeder: Max. 500 sheets; 60–256 g/m²; A3, A4, A5, B5, Letter, Legal, Custom (98x148 to 297x432mm)

PF-471 Paper feeder: Max. 1,000 sheets; 60–256 g/m²; A3, A4, A5, B5, Letter, Legal, Custom (98x148 to 297x432 mm)

DF-470* Document finisher + AK-470: Max. 500 sheets 60–256 g/m²; A3, A4, A5, B5, Letter, Legal, Custom (98x148 to 297x432 mm), 3 positions stapling up to 50 sheets A4 or 25 sheets A3

*Bridge unit AK-470 is required for the use of DF-470

Memory upgrade:

MDDR2-256: 256 MB; MDDR2-512: 512 MB, MDDR2-1024: 1.024 MB

CF*-Card: CF-4 (4 GB) for printing forms, fonts, logos, macro storage

USB Flash Memory: Supports direct printing and scanning of PDF, XPS, TIFF, JPEG files via USB Host interface

UG-33: ThinPrint support

USB IC Card Reader + Card Authentication Kit (B): Support for various authentication keys available

Optional interface

IB-50: Gigabit-Printserver 10BaseT/100BaseTX/1000BaseT

CB-470 Cabinet: Wooden desk with storage capacity, including castors (wheels)

CB-472 Cabinet: Metal desk with storage capacity, including castors (wheels)

Warranty

1-year warranty as standard.*** KYOCERA guarantees the drum and developer for 3 years or 200,000 pages (whichever occurs sooner), provided each device is used and cleaned in accordance with the service instructions.

KYO LIFE Up to 5-year on-site warranty extensions available for product and options.



Product depicted includes optional extras.

KYOCERA MITA Europe B.V. – Branch Office Germany – Otto-Hahn-Straße 12 – 40670 Meerbusch – Germany
Tel +49 (0) 2159 928-500 – Fax +49 (0) 2159 918-100

www.kyoceramita-europe.com – info@kyoceramita-europe.com

KYOCERA MITA Corporation – 2-28, 1-Chome – Tamatsukuri – Chuo-Ku

Osaka 540-8585 – Japan – www.kyoceramita.com

* KYOCERA does not warrant that any specifications mentioned will be error-free. Specifications are subject to change without notice. Information is correct at time of going to press. All other brand and product names may be registered trademarks or trademarks of their respective holders and are hereby acknowledged. **Based on 60 months' usage. ***Depending on the country.

KYOCERA